

FIRST ROUND

Paul Blazer

VS.

Shelby County

March 18, 1993

VISITORS (Last Name, First)

NO.	SHELBY COUNTY	Tot FG		3-POINT		FT		Rebounds			PF	TP	A	TO	BLK	S	TIME	
		FG	FGA	FG	FGA	FT	FTA	OFF	DEF	TOT								
20	MCKNIGHT, DWAN	2	8	1	6	1	1	3	3	6	1	6	0	4	0	0	32:00	
24	ALLEN, MONTAS	2	4	0	0	4	4	5	4	9	4	8	2	2	0	0	29:54	
42	SIMONS, MATT	7	13	0	0	0	2	3	6	9	3	14	0	1	3	0	24:53	
14	BURCHFIELD, J.	3	12	0	3	14	19	2	3	5	2	20	3	5	0	0	31:29	
22	HOFFETT, JOHN	6	14	1	2	5	9	1	4	5	2	18	3	2	0	2	32:00	
33	LONG, JEFF	1	2	0	0	2	2	2	2	4	2	4	0	0	0	0	9:13	
12	RICE, JASON	0	0	0	0	0	0	0	0	0	0	0	0	0	0	0	0:31	
TEAM REBOUNDS (INCLUDED IN TOTALS)																		
TOTALS		21	53	2	11	26	37	17	23	40	14	70	8	14	3	2	160	
TOTAL FG 1st HALF 9/15 60.0%				2nd HALF 12/38 31.6%				GAME 21/53 39.6%					DEADBALL REBOUNDS				4	
3-POINT FG 1st HALF 1/4 25.0%				2nd HALF 1/7 14.3%				GAME 2/11 18.2%										
FREE THROWS 1st HALF 2/3 66.7%				2nd HALF 24/34 70.6%				GAME 26/37 70.3%										

HOME (Last Name, First)

NO.	PAUL BLAZER	Tot FG		3-POINT		FT		Rebounds			PF	TP	A	TO	BLK	S	TIME	
		FG	FGA	FG	FGA	FT	FTA	OFF	DEF	TOT								
23	REED, AARON	4	9	0	2	1	2	2	4	6	5	9	3	1	0	2	27:18	
45	THOMAS, MARTY	9	22	3	10	10	10	4	9	12	2	31	1	5	2	2	32:00	
35	LYNCH, MICHAEL	4	10	0	0	0	0	1	0	1	4	8	3	1	0	1	17:26	
15	YOUNG, AUSTIN	1	3	0	0	0	0	1	1	2	4	2	0	1	0	0	11:05	
25	ROBINSON, RYAN	3	9	0	3	0	1	0	1	1	4	6	3	3	0	2	30:47	
10	VAUGHN, LAUREL	1	1	0	0	0	0	0	5	5	3	2	2	3	0	2	20:26	
55	HAMMOND, JASON	2	5	0	0	0	1	3	1	4	4	4	0	1	0	0	13:18	
03	HENRY, OMAR	0	0	0	0	0	0	0	0	0	1	0	0	0	0	0	1:13	
20	JACKSON, TREY	1	1	0	0	0	0	0	0	0	2	2	0	0	0	0	6:27	
TEAM REBOUNDS (INCLUDED IN TOTALS)																		
TOTALS		25	60	3	15	11	14	13	21	34	29	64	12	15	2	9	160	
TOTAL FG 1st HALF 5/16 31.3%				2nd HALF 20/44 45.5%				GAME 25/60 41.7%					DEADBALL REBOUNDS				3	
3-POINT FG 1st HALF 1/4 25.0%				2nd HALF 2/11 18.2%				GAME 3/15 20.0%										
FREE THROWS 1st HALF 0/0 0.0%				2nd HALF 11/14 78.6%				GAME 11/14 78.6%										

OFFICIALS: RAND. SPALDING, CHARLES KIRK, ALT.-C.B. AKINS
 Technicals: None

SCORE BY PERIODS

SHELBY COUNTY	21	14	23	12	=	70
PAUL BLAZER	11	17	15	21	=	64

Attendance: 11,225
 COMMENTS: POINTS OFF TURNOVERS
 SHELBY COUNTY 15 PAUL BLAZER 17
 Produced by the KHSAA Sweet Sixteen Stat Crew with FINAL III - a Product of LEXICON SPORTS™

SHELBY COUNTY "ROCKETS" vs PAUL BLAZER "TOMCATS"
1st Half Play by Play

PAGE : 1

Tip off at 9:00 p.m. on 03/18/93 at BOYS STATE TOURNEY GAME 8
Produced by the KHSAA Sweet Sixteen Stat Crew with FINAL III - a Product of LEXI

Player	Team	PAUL BLAZER
REED, AARON, THOMAS, MARTY, LYNCH, MICHAEL, YOUNG, AUSTIN, ROBINSON, RYAN		
1	1	Foul on YOUNG, AUSTIN
1-1	100%	1-2 50.0% 8 ft Lane Jump shot by YOUNG, AUSTIN
1-1	100%	2-4 50.0% 3 pt 22 ft Left Angle Jump shot by THOMAS, MARTY Assist by ROBINSON, RYAN
1-1	100%	3-5 60.0% 18 ft Left Angle Jump shot by ROBINSON, RYAN Assist by LYNCH, MICHAEL
1	2	Foul on YOUNG, AUSTIN
1	3	Sub In: VAUGHN, LAUREL Out: YOUNG, AUSTIN Foul on LYNCH, MICHAEL
2	4	Foul on LYNCH, MICHAEL Sub In: HAMMOND, JASON Out: LYNCH, MICHAEL
1-2	50.0%	4-7 57.1% 17 ft Right Angle Jump shot by REED, AARON
1	5	Foul on ROBINSON, RYAN
		Sub In: HENRY, OMAR Out: ROBINSON, RYAN
		Sub In: ROBINSON, RYAN Out: HENRY, OMAR
1	6	Foul on HAMMOND, JASON
2-3	66.6%	5-16 31.2% Layup Off Fast Break by ROBINSON, RYAN

Time	Score	SHELBY COUNTY	Player	Team
McKNIGHT, DWAN, ALLEN, MONTAS, SIMONS, MATT, BURCHFIELD, J., MOFFETT, JOHN Ball to ROCKETS				
1 7:55				
1 7:55	0-1*	BURCHFIELD, J., 2 Free Throws missed	1-2	50.0%
1 7:23	0-3*	4 ft Lane Jump shot by MOFFETT, JOHN	1-1	100%
1 6:53	*2-3			
1 6:43	2-5*	Driving Layup by BURCHFIELD, J.	1-1	100%
1 6:16	2-7*	3 ft Lane Turnaround by SIMONS, MATT Assist by ALLEN, MONTAS	1-1	100%
1 5:57	*5-7		1	1
1 5:43	5-9*	9 ft Right Side Turnaround by SIMONS, MATT Assist by MOFFETT, JOHN	2-2	100%
1 5:30	*7-9		1	2
1 5:22				
1 5:22				
1 5:21				
1 5:18	7-11*	18 ft Left Angle Jump shot by SIMONS, MATT	3-3	100%
1 4:52				
1 4:52				
1 4:52	7-14*	3 pt 22 ft Left Base Line Jump shot by MOFFETT, JOHN Assist by BURCHFIELD, J.	2-2	100%
1 4:21	*9-14		1	3
1 3:05	9-16*	Follow Follow by McKNIGHT, DWAN	1-2	50.0%
1 3:05				
1 3:05	9-17*	McKNIGHT, DWAN, 1 Free Throw made	1-1	100%
1 2:42		Foul on BURCHFIELD, J.	1	1
1 2:42				
1 2:26		Foul on SIMONS, MATT	1	2
1 2:11	9-19*	6 ft Lane Turnaround by SIMONS, MATT Assist by MOFFETT, JOHN	4-5	80.0%
1 1:49			2	4
1 1:17	9-21*	2 ft Lane Follow by ALLEN, MONTAS	1-2	50.0%
1 1:06				
1 1:06		Sub In: LONG, JEFF Out: SIMONS, MATT		
1 0:00	*11-21			

SHELBY COUNTY "ROCKETS" vs PAUL BLAZER "TOMCATS"
1st Half Play by Play

PAGE : 2

Tip off at 9:00 p.m. on 03/18/93 at BOYS STATE TOURNEY GAME 8
Produced by the KHSAA Sweet Sixteen Stat Crew with FINAL III - a Product of LEXI

Player	Team	PAUL BLAZER	Time	Score	SHELBY COUNTY	Player	Team
VAUGHN, LAUREL	ROBINSON,	RYAN, REED, AARON, HAMMOND, JASON, THOMAS, MARTY			McKNIGHT, DWAN, ALLEN, MONTAS, SIMONS, MATT, BURCHFIELD, J., MOFFETT, JOHN		
		Ball to TOMCATS					
2-6	33.3%	6-18	33.3%	6 ft Lane Jump shot by THOMAS, MARTY	2 7:43	*13-21	
				Foul on HAMMOND, JASON	2 7:10		
					2 7:10		
3-4	75.0%	7-20	35.0%	13 ft Left Side Jump shot by ROBINSON, RYAN	2 7:04	*15-21	
				Foul on HAMMOND, JASON	2 6:38		
				Sub In: LYNCH, MICHAEL Out: HAMMOND, JASON	2 6:38		
					2 6:38		
					2 6:32		
					2 6:01		
					2 6:01		
2-2	100%	2-2	100%	THOMAS, MARTY, 2 Free Throws made both	2 6:01	*17-21	
					2 5:50		
					2 5:45		
4-4	100%	4-4	100%	THOMAS, MARTY, 2 Free Throws made both	2 5:45	*19-21	
				Foul on REED, AARON	2 5:36		
					2 5:36	19-23*	ALLEN, MONTAS, 2 Free Throws made both
					2 5:16	19-26*	3 pt 22 ft Right Base Line Jump shot by
							McKNIGHT, DWAN
							Assist by BURCHFIELD, J.
							Foul on LONG, JEFF
				Sub In: JACKSON, TREY Out: VAUGHN, LAUREL	2 5:08		
				THOMAS, MARTY, 2 Free Throws made both	2 5:08		
6-6	100%	6-6	100%	THOMAS, MARTY, 2 Free Throws made both	2 5:08	*21-26	
					2 4:52		
0-1	00.0%	6-7	85.7%	ROBINSON, RYAN, 1 & Bonus missed 1st	2 4:52		
					2 4:31		
1-2	50.0%	7-9	77.7%	REED, AARON, 2 Free Throws missed 1st made 2nd	2 4:31	*22-26	
				Sub In: VAUGHN, LAUREL Out: LYNCH, MICHAEL	2 4:31		
				Layup Off Fast Break by JACKSON, TREY	2 4:18	*24-26	
				Assist by REED, AARON			
				Foul on JACKSON, TREY	2 4:09		
					2 4:09	24-28*	MOFFETT, JOHN, 1 & Bonus made both
					2 4:09		
1-2	50.0%	9-23	39.1%	Sub In: LYNCH, MICHAEL Out: JACKSON, TREY	2 3:57	*26-28	
				4 ft Lane Turnaround by LYNCH, MICHAEL			
				Assist by THOMAS, MARTY			
				Sub In: JACKSON, TREY Out: LYNCH, MICHAEL	2 3:46		
					2 3:46	26-30*	9 ft Left Side Bank by MOFFETT, JOHN
					2 3:09	*28-30	
2-5	40.0%	10-24	41.6%	14 ft Lane Jump shot by REED, AARON	2 2:55	28-32*	Driving Layup by BURCHFIELD, J.
					2 2:28	28-34*	12 ft Left Base Line Jump shot by MOFFETT, JOHN
					2 1:46		
				Foul on VAUGHN, LAUREL	2 1:46		
				Sub In: LYNCH, MICHAEL Out: JACKSON, TREY	2 1:46		
					2 1:46	28-35*	BURCHFIELD, J., 2 Free Throws made 1st missed 2nd
					2 1:33		
				Foul on REED, AARON	2 1:31		
					2 0:22		
				Sub In: HAMMOND, JASON Out: VAUGHN, LAUREL	2 0:07		
					2 0:06		
0-1	00.0%	7-10	70.0%	HAMMOND, JASON, 1 & Bonus missed 1st	2 0:00		
					2 0:00		
							3 pt 29 ft Left Angle Bank by BURCHFIELD, J., missed

Official Boxscore * OFFICIAL FIRST HALF *
 Date: 03-18-93 Site:BOYS STATE TOURNEY GAME 8

VISITORS (Last Name, First)

NO.	SHELBY COUNTY	Tot FG		3-POINT		FT	FTA	Rebounds			PF	TP	A	TO	BLK	S	TIME
		FG	FGA	FG	FGA			OFF	DEF	TOT							
20	McKNIGHT, DWAN	2	4	1	3	1	1	1	1	2	1	6	0	4	0	0	16:00
24	ALLEN, MONTAS	1	3	0	0	2	2	4	3	7	2	4	1	1	0	0	16:00
42	SIMONS, MATT	4	5	0	0	0	0	1	4	5	2	8	0	1	1	0	8:53
14	BURCHFIELD, J.	2	7	0	2	2	4	0	1	1	2	6	2	5	0	0	16:00
22	MOFFETT, JOHN	4	5	1	2	2	3	0	2	2	1	11	2	1	0	2	16:00
33	LONG, JEFF	0	1	0	0	0	0	0	2	2	2	0	0	0	0	0	7:07
TEAM REBOUNDS (INCLUDED IN TOTALS)								1	1	2							
TOTALS		13	25	2	7	7	12	7	13	20	10	35	5	12	1	2	80
TOTAL FG 1st HALF		9/15	60.0%	2nd HALF		4/10	40.0%	GAME		13/25	52.0%	DEADBALL					
3-POINT FG 1st HALF		1/4	25.0%	2nd HALF		1/3	33.3%	GAME		2/7	28.6%	REBOUNDS		2			
FREE THROWS 1st HALF		2/3	66.7%	2nd HALF		5/9	55.6%	GAME		7/12	58.3%						

HOME (Last Name, First)

NO.	PAUL BLAZER	Tot FG		3-POINT		FT	FTA	Rebounds			PF	TP	A	TO	BLK	S	TIME
		FG	FGA	FG	FGA			OFF	DEF	TOT							
23	REED, AARON	2	5	0	2	1	2	0	1	1	2	5	1	1	0	2	16:00
45	THOMAS, MARTY	2	10	1	4	6	6	3	3	6	0	11	1	3	1	2	16:00
35	LYNCH, MICHAEL	1	2	0	0	0	0	0	0	0	2	2	1	1	0	1	7:24
15	YOUNG, AUSTIN	1	2	0	0	0	0	1	0	1	2	2	0	0	0	0	2:38
25	ROBINSON, RYAN	3	5	0	1	0	1	0	0	0	1	6	1	2	0	2	15:07
10	VAUGHN, LAUREL	0	0	0	0	0	0	0	1	1	1	0	0	1	0	2	12:23
55	HAMMOND, JASON	0	2	0	0	0	1	0	1	1	3	0	0	0	0	0	6:36
03	HENRY, OHAR	0	0	0	0	0	0	0	0	0	0	0	0	0	0	0	0:53
20	JACKSON, TREY	1	1	0	0	0	0	0	0	0	1	2	0	0	0	0	2:59
TEAM REBOUNDS (INCLUDED IN TOTALS)								1	1	2							
TOTALS		10	27	1	7	7	10	5	7	12	12	28	4	10	1	9	80
TOTAL FG 1st HALF		5/16	31.3%	2nd HALF		5/11	45.5%	GAME		10/27	37.0%	DEADBALL					
3-POINT FG 1st HALF		1/4	25.0%	2nd HALF		0/3	0.0%	GAME		1/7	14.3%	Rebounds		3			
FREE THROWS 1st HALF		0/0	0.0%	2nd HALF		7/10	70.0%	GAME		7/10	70.0%						

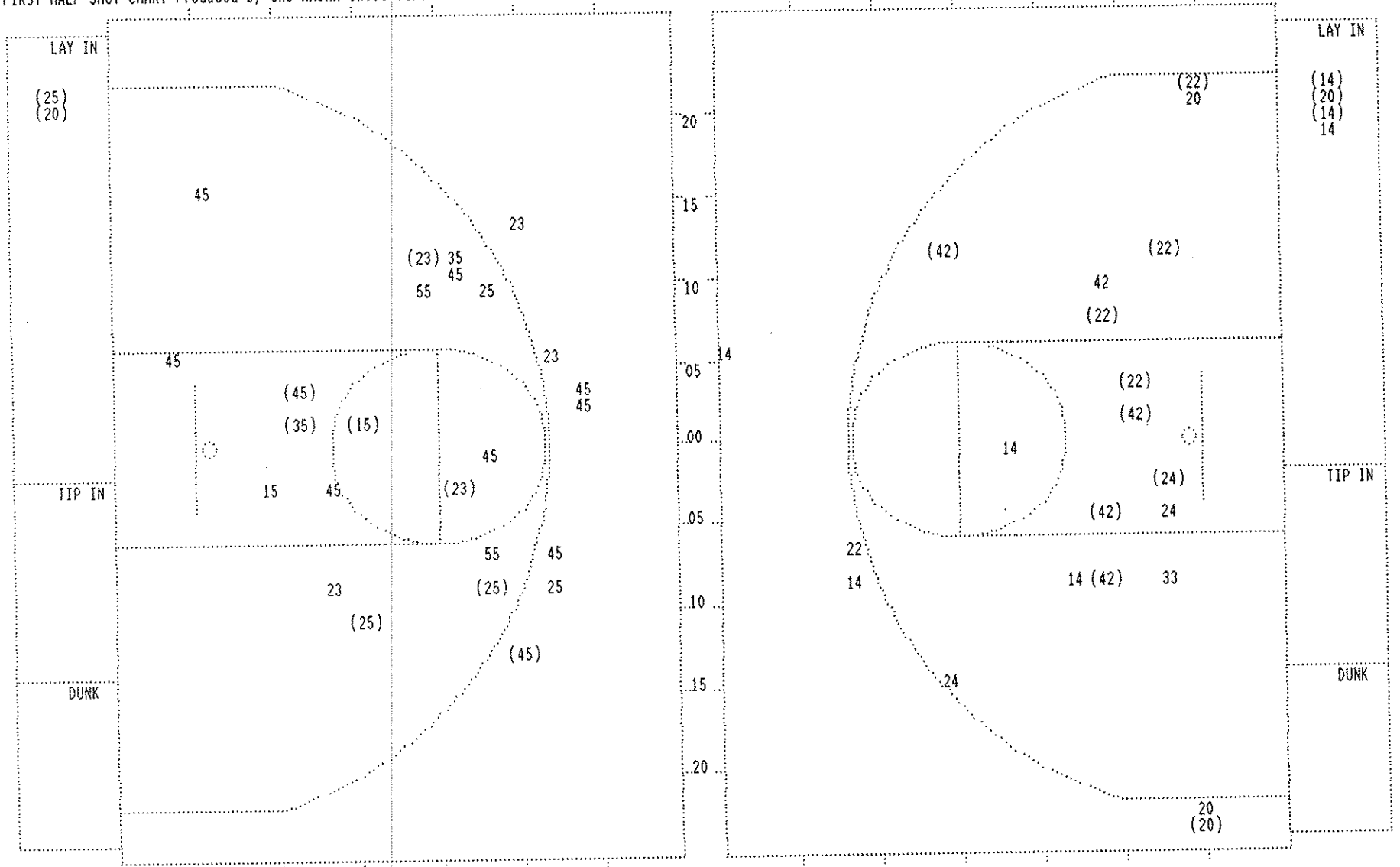
OFFICIALS: RAND. SPALDING, CHARLES KIRK, ALT.-C.B. AKINS
 Technicals: None

SCORE BY PERIODS
 SHELBY COUNTY 21 14 = 35
 PAUL BLAZER 11 17 = 28

Attendance: 11,225

COMMENTS: POINTS OFF TURNOVERS
 SHELBY COUNTY 14 PAUL BLAZER 11 SHELBY COUNTY 7 PAUL BLAZER 4

Produced by the KHSAA Sweet Sixteen Stat Crew with FINAL III - a Product of LEXICON SPORTS™



PAUL BLAZER					
Player			Player		
23 - REED, AARO	2 / 5	40.0%	20 - JACKSON, T	1 / 1	100.0%
45 - THOMAS, MA	2 / 10	20.0%	55 - HAMMOND, J	0 / 2	0.0%
35 - LYNCH, MIC	1 / 2	50.0%			
15 - YOUNG, AUS	1 / 2	50.0%			
25 - ROBINSON,	3 / 5	60.0%			
Layups	1-9 Ft	10-15 Ft	Over 15 Ft	3 Pointers	Total
2 / 2	3 / 6	2 / 3	2 / 9	1 / 7	10 / 27
100.0%	50.0%	66.7%	22.2%	14.3%	37.0%

SHELBY COUNTY					
Player			Player		
20 - MCKNIGHT,	2 / 4	50.0%	33 - LONG, JEFF	0 / 1	0.0%
24 - ALLEN, MON	1 / 3	33.3%			
42 - SIMONS, MA	4 / 5	80.0%			
14 - BURCHFIELD	2 / 7	28.5%			
22 - MOFFETT, J	4 / 5	80.0%			
Layups	1-9 Ft	10-15 Ft	Over 15 Ft	3 Pointers	Total
3 / 4	6 / 8	1 / 4	1 / 2	2 / 7	13 / 25
75.0%	75.0%	25.0%	50.0%	28.6%	52.0%

SHELBY COUNTY "ROCKETS" vs PAUL BLAZER "TOMCATS"
2nd Half Play by Play

Tip off at 9:00 p.m. on 03/18/93 at BOYS STATE TOURNEY GAME 8
Produced by the KHSAA Sweet Sixteen Stat Crew with FINAL III - a Product of LEXIC

PAGE : 1

Player	Team	PAUL BLAZER	Time	Score	SHELBY COUNTY	Player	Team			
REED, AARON	THOMAS, MARTY	LYNCH, MICHAEL	YOUNG, AUSTIN	ROBINSON, RYAN	McKNIGHT, DWAN	ALLEN, MONTAS	SIMONS, MATT	BURCHFIELD, J.	MOFFETT, JOHN	Ball to ROCKETS
3-11	1 27.2% 11-28 39.2%	1	Foul on THOMAS, MARTY	3 7:52						
		2	Turnaround Layup by THOMAS, MARTY	3 7:32 *30-35						
		3	Foul on REED, AARON	3 6:38						
				3 6:33	30-37*	7 ft Left Side Turnaround by SIMONS, MATT	5-6	83.3%	14-29	48.2%
						Assist by MOFFETT, JOHN	3			6
		2	Sub In: HAMMOND, JASON Out: LYNCH, MICHAEL	3 6:11						
		3	Player Control Foul on THOMAS, MARTY	3 5:37						
				3 5:18	30-39*	3 ft Lane Turnaround by SIMONS, MATT	6-7	85.7%	15-34	44.1%
						Assist by ALLEN, MONTAS	2			7
			REB: 17 A: 4 BLK: 2 TO: 13 PF: 3	3 5:12						
			S: 9 FT: 7-10 70.0% FG: 11-31 35.4%	No. 1 PAUL BLAZER	T I M E - O U T					
						REB: 25 A: 7 BLK: 2 TO: 12 PF: 0				
						S: 2 FT: 7-12 58.3% FG: 15-34 44.1%				
			Sub In: JACKSON, TREY Out: YOUNG, AUSTIN	3 4:52						
1-3	33.3% 12-33 36.3%	5	14 ft Lane Jump shot by HAMMOND, JASON	3 4:52 *32-39						
		2	Assist by REED, AARON							
		2	Foul on ROBINSON, RYAN	3 3:57	32-41*	2 ft Lane Driving by MOFFETT, JOHN	5-8	62.5%	16-37	43.2%
				3 3:33						
				3 3:14	32-43*	9 ft Right Side Jump shot by BURCHFIELD, J.	3-12	25.0%	17-38	44.7%
				3 2:54		Foul on ALLEN, MONTAS	3			1
8-8	100% 9-12 75.0%	5	THOMAS, MARTY, 2 Free Throws made both	3 2:54 *34-43						
		2	Foul on JACKSON, TREY	3 2:46						
			Sub In: VAUGHN, LAUREL Out: JACKSON, TREY	3 2:46						
			Sub In: YOUNG, AUSTIN Out: REED, AARON	3 2:46	34-45*	BURCHFIELD, J., 2 Free Throws made both	4-6	66.6%	9-14	64.2%
				3 2:29	34-47*	26 ft Right Side Follow by ALLEN, MONTAS	2-4	50.0%	18-40	45.0%
4-13	30.7% 13-36 36.1%		12 ft Lane Jump shot by THOMAS, MARTY	3 2:11 *36-47						
			Sub In: LYNCH, MICHAEL Out: HAMMOND, JASON	3 2:02						
				3 2:02	36-49*	Driving Layup by MOFFETT, JOHN	6-10	60.0%	19-41	46.3%
5-14	35.7% 14-37 37.8%		Driving Layup by THOMAS, MARTY	3 1:37 *38-49						
			Sub In: REED, AARON Out: YOUNG, AUSTIN	3 1:28						
		3	Foul on ROBINSON, RYAN	3 1:21	38-50*	MOFFETT, JOHN, 2 Free Throws missed 1st made 2nd	3-5	60.0%	10-16	62.5%
		4	Foul on ROBINSON, RYAN	3 1:07						
				3 1:07	38-52*	ALLEN, MONTAS, 1 & Bonus made both	4-4	100%	12-18	66.6%
				3 1:07		Sub In: LONG, JEFF Out: ALLEN, MONTAS				
2-4	50.0% 15-38 39.4%	6	16 ft Circle Jump shot by LYNCH, MICHAEL	3 1:07 *40-52						
		3	Assist by REED, AARON	3 0:35						
		3	Foul on LYNCH, MICHAEL	3 0:35	40-54*	MOFFETT, JOHN, 2 Free Throws made both	5-7	71.4%	14-20	70.0%
			Sub In: HAMMOND, JASON Out: LYNCH, MICHAEL	3 0:35						
			Sub In: YOUNG, AUSTIN Out: REED, AARON	3 0:35						
		2	Foul on VAUGHN, LAUREL	3 0:35		MOFFETT, JOHN, 1 Free Throw missed	5-8	62.5%	14-21	66.6%
				3 0:31						
				3 0:31		Sub In: RICE, JASON Out: BURCHFIELD, J.				
6-15	40.0% 16-39 41.0%	7	3 pt 22 ft Right Angle Jump shot by THOMAS, MARTY	3 0:31 40-56*						
		2	Assist by ROBINSON, RYAN	3 0:19 *43-56						
				3 0:02	43-58*	Follow Tip by LONG, JEFF	1-2	50.0%	20-45	44.4%

SHELBY COUNTY "ROCKETS" vs PAUL BLAZER "TOMCATS"
2nd Half Play by Play

Tip off at 9:00 p.m. on 03/18/93 at BOYS STATE TOURNEY GAME 8
Produced by the KHSAA Sweet Sixteen Stat Crew with FINAL III - a Product of LEXICON

PAGE : 3

Player	Team	PAUL BLAZER	Time	Score	SHELBY COUNTY	Player	Team
ROBINSON, RYAN	HAMMOND,	JASON, YOUNG, AUSTIN, THOMAS, MARTY, VAUGHN, LAUREL			BURCHFIELD, J., MCKNIGHT, DWAN, MOFFETT, JOHN, SIMONS, MATT, LONG, JEFF		
3	10	Ball to TOMCATS Foul on YOUNG, AUSTIN	4 7:43				
7-17	41.1% 17-41 41.4%	Turnaround Layup by THOMAS, MARTY	4 7:43 43-59*		BURCHFIELD, J., 2 Free Throws missed 1st made 2nd 5-8	62.5%	17-25 68.0%
1	8	Assist by VAUGHN, LAUREL	4 7:32 *45-59				
2-4	50.0% 18-43 41.8%	Follow Tip by HAMMOND, JASON	4 7:14 *47-59				
4	11	Foul on HAMMOND, JASON	4 7:01		Sub In: ALLEN, MONTAS Out: LONG, JEFF		
		Sub In: LYNCH, MICHAEL Out: HAMMOND, JASON	4 7:01				
1-1	100% 19-44 43.1%	Turnaround Layup by VAUGHN, LAUREL	4 7:01 47-61*		BURCHFIELD, J., 2 Free Throws made both	7-10	70.0% 19-27 70.3%
2	9	Assist by LYNCH, MICHAEL	4 6:47 *49-61				
		Sub In: REED, AARON Out: YOUNG, AUSTIN	4 6:27		Foul on SIMONS, MATT	3	2
10-10	100% 11-14 78.5%	THOMAS, MARTY, 2 Free Throws made both	4 6:27				
3-8	37.5% 20-45 44.4%	15 ft Lane Jump shot by REED, AARON	4 6:27 *51-61				
3	10	Assist by LYNCH, MICHAEL	4 5:58 *53-61				
3-5	60.0% 21-46 45.6%	Turnaround Layup by LYNCH, MICHAEL	4 5:35		Player Control Foul on MOFFETT, JOHN	2	3
2	11	Assist by VAUGHN, LAUREL	4 5:22 *55-61				
		REB: 22 A: 11 BLK: 2 TO: 14 PF: 11	4 5:20		REB: 36 A: 7 BLK: 2 TO: 14 PF: 3		
		S: 9 FT: 11-14 78.5% FG: 21-46 45.6%	No. 2 PAUL BLAZER T I M E - O U T		S: 2 FT: 19-27 70.3% FG: 20-49 40.8%		
		Sub In: JACKSON, TREY Out: REED, AARON	4 5:20				
4	12	Foul on LYNCH, MICHAEL	4 4:56		BURCHFIELD, J., 1 & Bonus missed 1st	7-11	63.6% 19-28 67.8%
		Sub In: REED, AARON Out: JACKSON, TREY	4 4:56				
8-19	42.1% 22-50 44.0%	3 pt 22 ft Right Side Jump shot by THOMAS, MARTY	4 4:13		Foul on ALLEN, MONTAS	4	4
3	12	Assist by ROBINSON, RYAN	4 3:47				
3	13	Foul on VAUGHN, LAUREL	4 3:23 *58-61				
		Sub In: YOUNG, AUSTIN Out: VAUGHN, LAUREL	4 3:07				
4-9	44.4% 23-53 43.3%	Turnaround Rebound by REED, AARON	4 3:07 58-62*		BURCHFIELD, J., 1 & Bonus made 1st missed 2nd	8-13	61.5% 20-30 66.6%
4	14	Foul on YOUNG, AUSTIN	4 2:11 *60-62				
			4 1:14				
			4 1:14 60-64*		BURCHFIELD, J., 1 & Bonus made both	10-15	66.6% 22-32 68.7%
		REB: 30 A: 12 BLK: 2 TO: 15 PF: 14	4 1:14		REB: 38 A: 7 BLK: 3 TO: 14 PF: 4		
		S: 9 FT: 11-14 78.5% FG: 23-53 43.3%	No. 3 PAUL BLAZER T I M E - O U T		S: 2 FT: 22-32 68.7% FG: 20-52 38.4%		
		Sub In: HAMMOND, JASON Out: YOUNG, AUSTIN	4 1:14				
4-10	40.0% 24-55 43.6%	Follow Rebound by LYNCH, MICHAEL	4 1:03 *62-64				
		REB: 31 A: 12 BLK: 2 TO: 15 PF: 14	4 1:03		REB: 38 A: 7 BLK: 3 TO: 14 PF: 4		
		S: 9 FT: 11-14 78.5% FG: 24-55 43.6%	No. 4 PAUL BLAZER T I M E - O U T		S: 2 FT: 22-32 68.7% FG: 20-52 38.4%		
		Subs In: HENRY, OMAR, VAUGHN, LAUREL, JACKSON, TREY	4 1:03				
		Out: ROBINSON, RYAN, LYNCH, MICHAEL, HAMMOND, JASON					
		REB: 31 A: 12 BLK: 2 TO: 15 PF: 14	4 1:03		REB: 38 A: 7 BLK: 3 TO: 14 PF: 4		
		S: 9 FT: 11-14 78.5% FG: 24-55 43.6%	T I M E - O U T SHELBY COUNTY No. 1		S: 2 FT: 22-32 68.7% FG: 20-52 38.4%		
1	15	Foul on HENRY, OMAR	4 1:00				
		Sub In: HAMMOND, JASON Out: JACKSON, TREY	4 0:59				
		Sub In: ROBINSON, RYAN Out: HENRY, OMAR	4 0:59				
		Sub In: LYNCH, MICHAEL Out: VAUGHN, LAUREL	4 0:59				
		Sub In: HENRY, OMAR Out: ROBINSON, RYAN	4 0:59 62-66*		BURCHFIELD, J., 1 & Bonus made both	12-17	70.5% 24-34 70.5%
		Sub In: ROBINSON, RYAN Out: HENRY, OMAR	4 0:42				
4	16	Foul on REED, AARON	4 0:37				
			4 0:36				
			4 0:09 64-68*		BURCHFIELD, J., 1 & Bonus made both	13-18	72.2% 25-35 71.4%
9-22	40.9% 25-59 42.3%	Shot by THOMAS, MARTY	4 0:09 *64-70		BURCHFIELD, J., 1 & Bonus made both	14-19	73.6% 26-36 72.2%
		Subs In: HENRY, OMAR, VAUGHN, LAUREL, JACKSON, TREY	4 0:20 *64-68				
		Out: ROBINSON, RYAN, LYNCH, MICHAEL, HAMMOND, JASON	4 0:20				
5	17	Foul on REED, AARON	4 0:15				
		Subs In: ROBINSON, RYAN, LYNCH, MICHAEL, HAMMOND, JASON	4 0:15		MOFFETT, JOHN, 1 & Bonus missed 1st	5-9	55.5% 26-37 70.2%
		Out: HENRY, OMAR, REED, AARON, JACKSON, TREY	4 0:09				
			4 0:02 64-70*		Shot by SIMONS, MATT	7-13	53.8% 21-53 39.6%
					Assist by BURCHFIELD, J.	3	8

